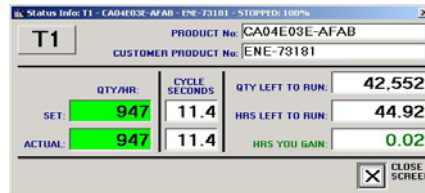




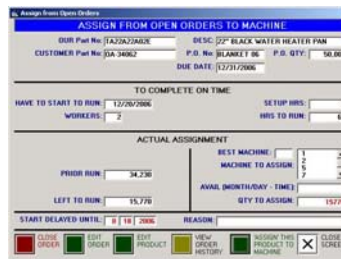
4. Automatic data collection in real time (update every 30 seconds).

Visual and numerical presentation of each monitored line includes:

- actual production output
- quantity produced at any given moment
- actual completion time
- starting time of the next scheduled job
- profitability (is the company below, above or at break-even point based on gross and net sales targets?)



5. Scheduling production orders is simplified: just grab a job from a list of open orders and assign it to one of the less busy lines



6. "Production View" screen is a jewel of our program. One quick glance at the monitor provides most valuable information including:

- how many lines are currently running;
- how productive they are;
- which jobs will complete on time, and which will be late;
- for how many more days lines are loaded with jobs;
- how well is company doing financially (this could be a hidden option).

